

NOTICE TO MARINERS



Notice of construction activities on Seagreen Offshore Wind Farm

| | | | |
|---------------|------------|---------------|---------|
| Date of Issue | 31/01/2025 | Notice Number | 01/2025 |
|---------------|------------|---------------|---------|

Seagreen Offshore Wind Farm – Site Demarcation Buoy Off Station.

Contact Details for Marine Coordination and Fisheries Liaison

The following contact can provide more information if required:

| | |
|-------------------------|---|
| Telephone Number, 24/7 | +44 (0) 1674 689401 |
| Duty Marine Coordinator | seagreenmarinecoordination@sse.com |
| Address | Seagreen Wind Energy Ltd, Windy Waves House Montrose Port Authority, South Quay Ferryden, Montrose, Angus DD10 9SL. |

Fisheries liaison is coordinated by Brown and May Marine Ltd. For all fisheries enquiries, John Watt is primary contact:

| | |
|------------------|---|
| Telephone Number | +44 (0) 1379872144 |
| Mobile number | +44 (0) 7590 880746 |
| Email | John.Watt@Brownmay.com |
| Address | Brown and May Marine Progress Way Mid Suffolk Business Park Eye, Suffolk IP23 7HU |

1. Activity Description.

A Seagreen Offshore Windfarm site demarcation Special Mark (No 2) buoy has been reported off-station. The as-laid diagram for the buoy is show below in fig 1. The Special mark is pillar shaped with a yellow X shaped top mark exhibiting a FI Y 5s light character (top shape has been noted as missing). The last know location was 57°13.1'N, 000°53.2'E, sited on the 30/01/25 (fig2).

NOTICE TO MARINERS

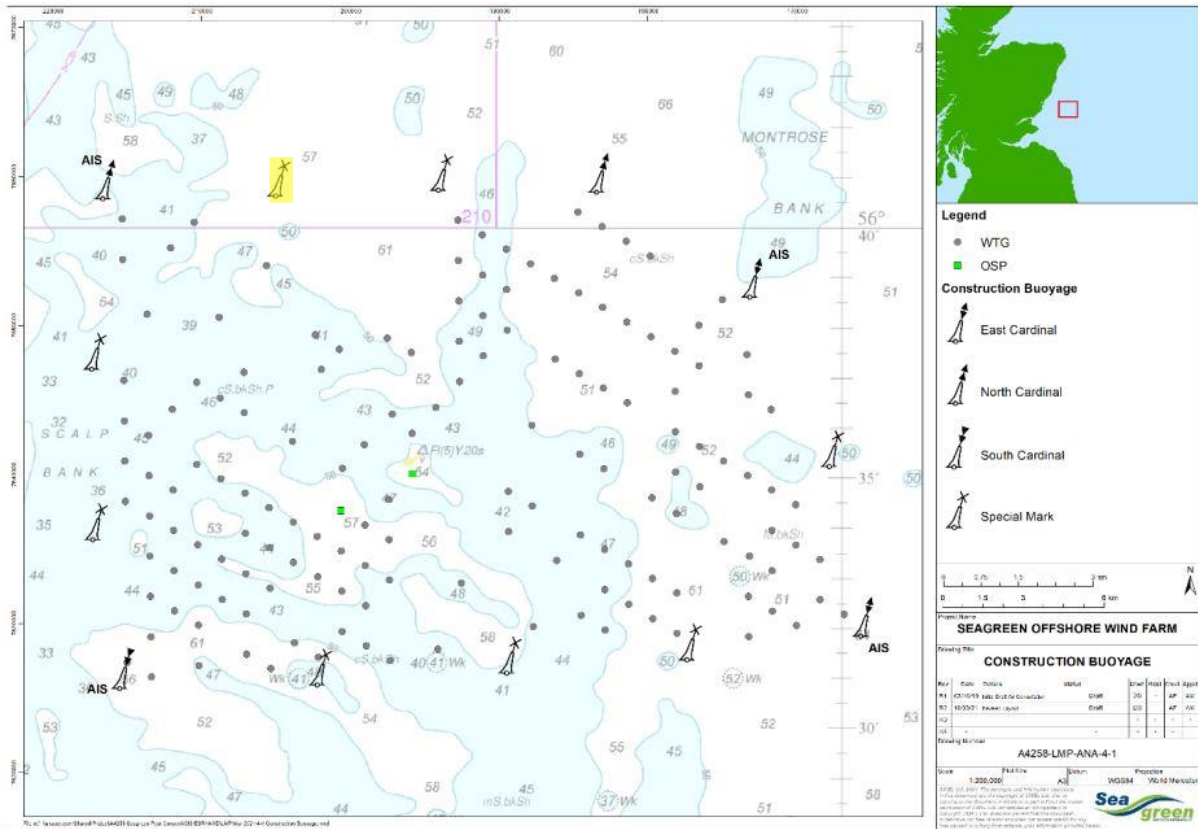


Fig 1 – Seagreen Construction Buoyage – Special Mark off location highlighted in Yellow.



Fig 2 – Special Mark (No2) off location

NOTICE TO MARINERS



2. Safety Zones

As all the Seagreen Wind Turbine Generators are fully commissioned, mandatory 500m safety zones shall be established around any WTG where major maintenance work is being undertaken, where major maintenance is as per the definition given in the 2007 Regulations. The safety zones will be active whenever a major maintenance vessel is at the WTG during the operational phase. Up to five of these safety zones could be concurrently active, but no more than four where there is one active 500m safety zone around the Offshore Sub-station Platform.

A mandatory 500m safety zone shall be established around the Offshore Sub-station Platform where major maintenance work is being undertaken, where major maintenance is as per the definition given in the 2007 Regulations. The safety zone will be active whenever a major maintenance vessel is at the OSP during the operational phase.

MARINERS ARE REMINDED to navigate with caution and keep continued watch on VHF Ch.70/16 when navigating the area.

3. Distribution List

A central list of recipients is maintained by the Marine Coordinator; if you are not the appropriate recipient of these notices, or do not wish to receive the notices in the future, please contact us at the address included in Section 1 of this notice.