

NOTICE TO MARINERS



Notice to Mariners associated with construction activities on Seagreen Offshore Wind Farm

Date of Issue	17-12-21	Notice Number	18-2021 Revision 4
---------------	----------	---------------	--------------------

Seagreen Boulder Clearance and Relocation Works Revision 4

Contact Details for Marine Coordination and Fisheries Liaison

The following contact can provide more information if required:

Telephone Number (Day Operations)	+44 (0) 333 344 5255
Email for Marine Coordinator	seagreenmarinecoordination@sse.com
Address	Seagreen Wind Energy Ltd 1 Waterloo Street Glasgow Glasgow G2 6AY

Fisheries liaison is coordinated by Brown and May Marine Ltd. For all fisheries enquiries, Alex Winrow-Giffin is primary contact:

Telephone Number	+44 (0) 1379872144
Mobile number	+44 (0) 7760 160039
Email	Alex@brownmay.com
Address	Brown and May Marine Progress Way Mid Suffolk Business Park Eye, Suffolk IP23 7HU

NOTICE TO MARINERS

1. Area of Planned Activity.

A boulder clearance and relocation campaign will continue within the Seagreen Offshore Wind Farm site boundary. The site boundary coordinates are shown below in table 1 with the campaign area shown in fig 1 in red.

ID	Latitude (DDM WGS 84)	Longitude (DDM WGS 84)
01	56° 40.631' N	1° 43.829' W
02	56° 40.606' N	1° 36.151' W
03	56° 39.317' N	1° 36.884' W
04	56° 37.913' N	1° 36.151' W
05	56° 39.923' N	1° 34.627' W
06	56° 31.903' N	1° 29.311' W
07	56° 31.724' N	1° 33.882' W
08	56° 32.983' N	1° 34.195' W
09	56° 33.051' N	1° 35.583' W
10	56° 31.666' N	1° 35.352' W
11	56° 30.803' N	1° 56.378' W
12	56° 40.653' N	1° 56.226' W
13	56° 40.648' N	1° 52.170' W
14	56° 39.836' N	1° 51.101' W
15	56° 38.138' N	1° 46.249' W
16	56° 38.383' N	1° 45.181' W
17	56° 40.157' N	1° 45.487' W

Table 1 – Seagreen site boundary coordinates.

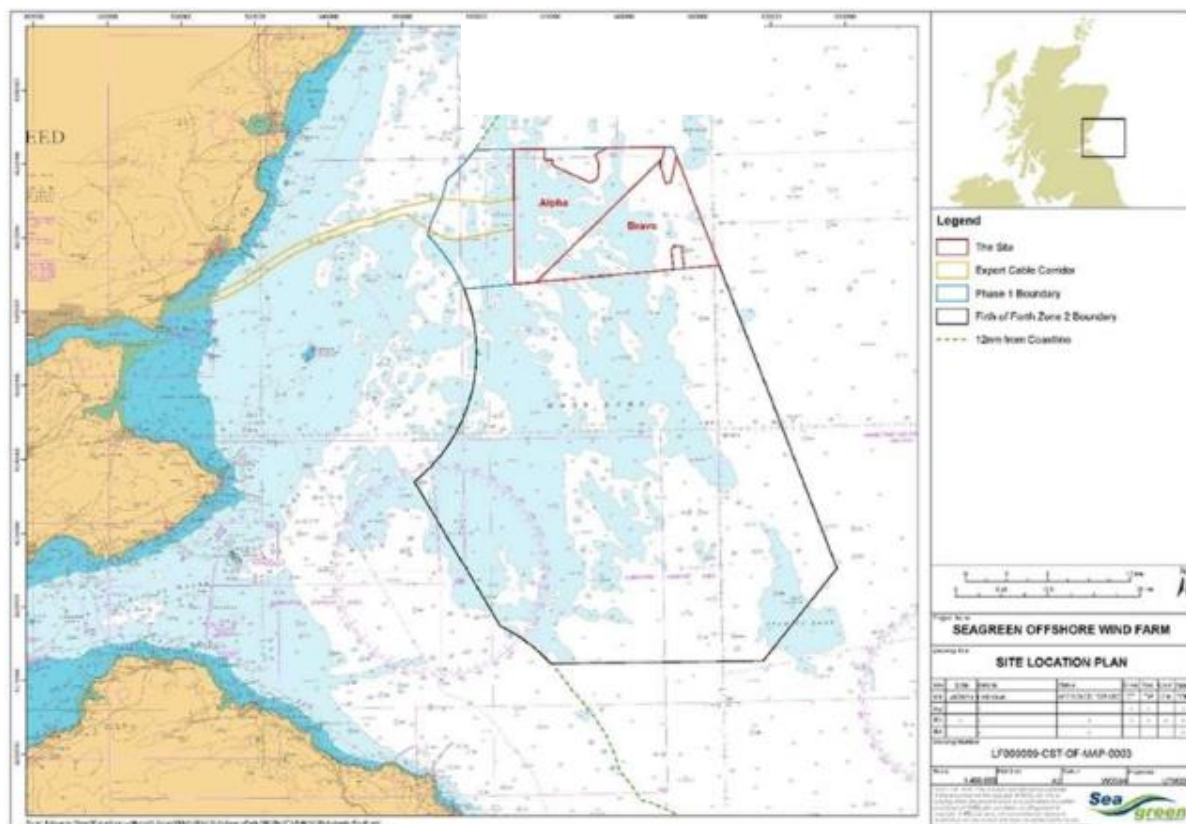


Fig 1 – Seagreen site boundary

NOTICE TO MARINERS

2. Activity Description.

On behalf of Seagreen Wind Energy Ltd, Seaway 7 will deliver boulder clearance and relocation services on the Inter Array Cable routes, Wind Turbine Generator Foundation Jacket locations.

A ROV (remotely operated vehicle) with integrated grab tool will be launched using the vessel's heave compensated crane to facilitate the relocation of pre-selected boulders from working areas. Any seabed debris located within working areas will also be relocated. An example of the ROV and integrated grab tool is shown below in fig 2.

Siem Dorado will continue with boulder clearance and relocation activities on the inter-array cable routes and WTG foundation jacket locations. Further details of Siem Dorado are shown below

On behalf of Seagreen Wind Energy a second vessel will join the boulder clearance and relocation campaign, The vessel Sartor will arrive on site on or around the 23rd of January to commence boulder clearance activities around the wind turbine generator jack up installation vessel locations. The vessel will utilise a remotely operated vehicle similar to the one shown in fig 2. Details of Sartor are shown below.



Fig 2 – ROV with integrated grab tool.

NOTICE TO MARINERS



3. Vessel associated with this activity.

Vessel Name – Siem Dorado	
General Description and Dimensions:	Offshore Supply Vessel - 93.6m LOA, 19.74m beam, 5.6m draught
Call Sign:	C6YG5
MMSI:	311031800
Direct Bridge/ Masters Number	+47 22 40 82 44
Onshore Representative:	George Cooper, Seaway 7 07545 642881



NOTICE TO MARINERS

Vessel Name – Sartor	
General Description and Dimensions:	Offshore Supply Vessel - 82.5m LOA, 18.8m beam, 5m draught
Call Sign:	3ESV4
MMSI:	372633000
Direct Bridge/ Masters Number	Vessel VSAT: +4753007246 Vessel Master: +44 (0) 7951071632
Onshore Representative:	Dave Crossling, Hughes Subsea 07949 654468



4. General Safety Advice

Siem Dorado and Sartor will exhibit appropriate lights and shapes prescribed by the International Regulations for Preventing Collisions at Sea, relative to their operations. All vessels engaged in the activity will also transmit an Automatic Identification System (AIS) message.

MARINERS ARE REMINDED to navigate with caution and keep continued watch on VHF Ch. 70/16 when navigating the area

NOTICE TO MARINERS



4.1 Safety Zones

Following consideration by Scottish government ministers it has been agreed that during the construction phases of the Seagreen development mandatory rolling 500m safety zones will be established around each Wind Turbine Generator and/or their foundations whilst construction works are in progress, as indicated by the presence of a construction vessel. The safety zones will be triggered whenever a vessel is on station at a WTG and undertaking construction activities.

In addition, mandatory pre commissioning 50m safety zones will be established around each Wind Turbine Generator and/or their foundations when construction works have been completed but prior to Wind Farm commissioning or where construction works have only been partially completed. These safety zones will be active at any structure during the construction phase where a construction vessel is not present at a Wind Turbine Generator.

5. Distribution List

A central list of recipients is maintained by the Marine Coordinator; if you are not the appropriate recipient of these notices, or do not wish to receive the notices in the future, please contact us at the address included in Section 1 of this notice.