

# NOTICE TO MARINERS



Notice to Mariners associated with construction activities on Seagreen Offshore Wind Farm

Date of Issue	17-05-22	Notice Number	18-2021 Revision 6
---------------	----------	---------------	--------------------

## Seagreen Boulder Clearance and Relocation Works Revision 6

### Contact Details for Marine Coordination and Fisheries Liaison

The following contact can provide more information if required:

Telephone Number (Day Operations)	+44 (0) 333 344 5255
Email for Marine Coordinator	<a href="mailto:seagreenmarinecoordination@sse.com">seagreenmarinecoordination@sse.com</a>
Address	Seagreen Wind Energy Ltd 1 Waterloo Street Glasgow Glasgow G2 6AY

Fisheries liaison is coordinated by Brown and May Marine Ltd. For all fisheries enquiries, Alex Winrow-Giffin is primary contact:

Telephone Number	+44 (0) 1379872144
Mobile number	+44 (0) 7760 160039
Email	<a href="mailto:Alex@brownmay.com">Alex@brownmay.com</a>
Address	Brown and May Marine Progress Way Mid Suffolk Business Park Eye, Suffolk IP23 7HU

### 1. Area of Planned Activity.

A second vessel will join the ongoing boulder clearance and relocation campaign within the Seagreen Offshore Wind Farm site boundary. The site boundary coordinates are shown below in table 1 with the campaign area shown in fig 1 in red.

# NOTICE TO MARINERS

ID	Latitude (DDM WGS 84)	Longitude (DDM WGS 84)
01	56° 40.631' N	1° 43.829' W
02	56° 40.606' N	1° 36.151' W
03	56° 39.317' N	1° 36.884' W
04	56° 37.913' N	1° 36.151' W
05	56° 39.923' N	1° 34.627' W
06	56° 31.903' N	1° 29.311' W
07	56° 31.724' N	1° 33.882' W
08	56° 32.983' N	1° 34.195' W
09	56° 33.051' N	1° 35.583' W
10	56° 31.666' N	1° 35.352' W
11	56° 30.803' N	1° 56.378' W
12	56° 40.653' N	1° 56.226' W
13	56° 40.648' N	1° 52.170' W
14	56° 39.836' N	1° 51.101' W
15	56° 38.138' N	1° 46.249' W
16	56° 38.383' N	1° 45.181' W
17	56° 40.157' N	1° 45.487' W

Table 1 – Seagreen site boundary coordinates.

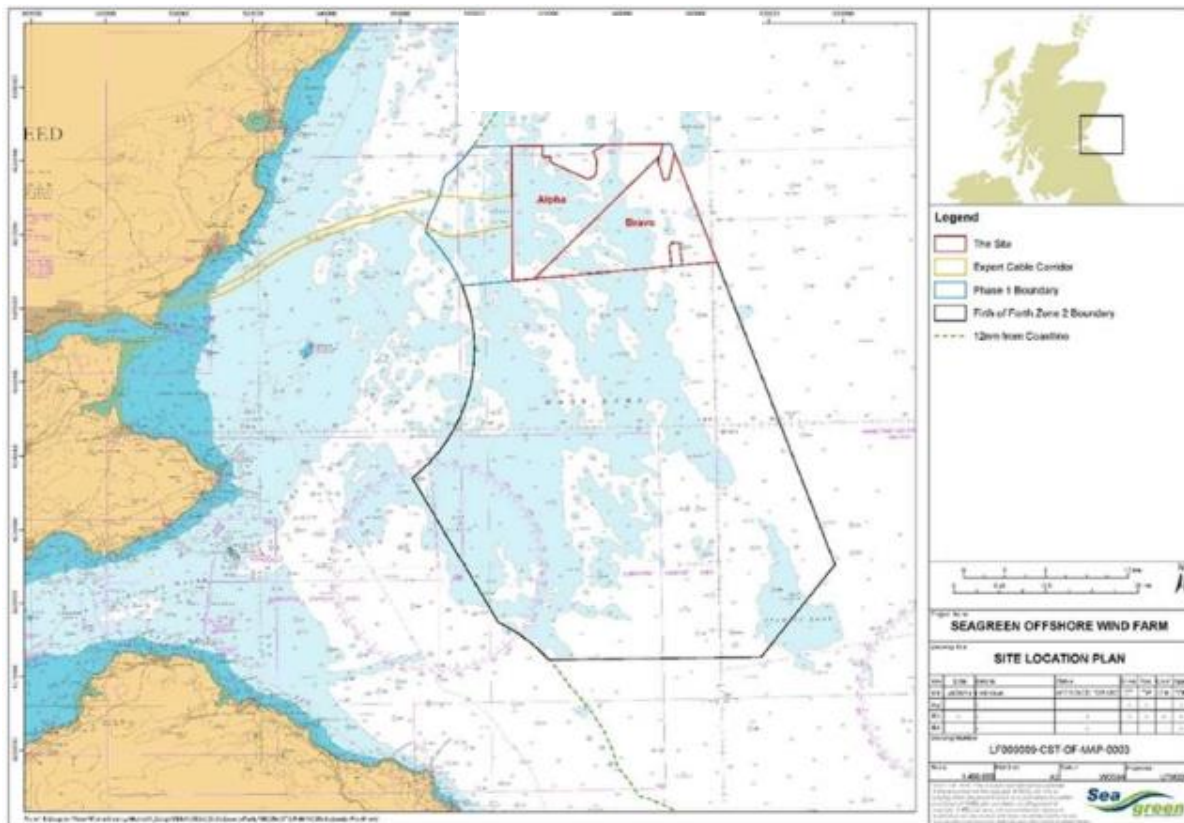


Fig 1 – Seagreen site boundary

# NOTICE TO MARINERS

## 2. Activity Description.

Seagreen Wind Energy Ltd and Seaway 7 will conduct boulder clearance and relocation works on the Seagreen Inter Array Cable routes and Wind Turbine Generator Foundation Jacket locations.


A ROV (remotely operated vehicle) with integrated grab tool will be launched using the vessels' heave compensated crane to facilitate the relocation of pre-selected boulders from working areas. Any seabed debris located within working areas will also be relocated. An example of the ROV and integrated grab tool is shown below in fig 2.

A second boulder clearance vessel shall join the existing vessel Sartor, Inyanga Entsha is expected to arrive at site on or around the 20<sup>th</sup> of May. Details of both vessels are below.




Fig 2 – ROV with integrated grab tool.

## 3. Vessel associated with this activity.

Vessel – Sartor	Contact Details	
	Call Sign	3ESV4
	MMSI	372633000
	Vessel Details	
	Length	82.5m
	Beam	18.8m
	Draft	5.0m
	Vessel Contact	Dave Crossling, Hughes Subsea 07949 654468

# NOTICE TO MARINERS

Vessel – Inyanga Entsha	Contact Details	
	Call Sign	LXIY
	MMSI	253769000
	Vessel Details	
	Length	57.9m
	Beam	14.0m
	Draft	3.9m
	Vessel Contact	Dave Crossling, Hughes Subsea 07949 654468

## 4. General Safety Advice

Both vessels will exhibit appropriate lights and shapes prescribed by the International Regulations for Preventing Collisions at Sea, relative to their operations. All vessels engaged in the activity will also transmit an Automatic Identification System (AIS) message.

**MARINERS ARE REMINDED** to navigate with caution and keep continued watch on VHF Ch. 70/16 when navigating the area

### 4.1 Safety Zones

Following consideration by Scottish government ministers it has been agreed that during the construction phases of the Seagreen development mandatory rolling 500m safety zones will be established around each Wind Turbine Generator and/or their foundations whilst construction works are in progress, as indicated by the presence of a construction vessel. The safety zones will be triggered whenever a vessel is on station at a WTG and undertaking construction activities.

In addition, mandatory pre commissioning 50m safety zones will be established around each Wind Turbine Generator and/or their foundations when construction works have been completed but prior to Wind Farm commissioning or where construction works have only been partially completed. These safety zones will be active at any structure during the construction phase where a construction vessel is not present at a Wind Turbine Generator.

## 5. Distribution List

A central list of recipients is maintained by the Marine Coordinator; if you are not the appropriate recipient of these notices, or do not wish to receive the notices in the future, please contact us at the address included in Section 1 of this notice.