

NOTICE TO MARINERS



Notice of activities associated with survey operations on Seagreen Offshore Wind Farm

Date of Issue	02/07/2021	Notice Number	10/2021
---------------	------------	---------------	---------

Seagreen Phase 1A Export Cable Geophysical Survey

Contact Details for Marine Coordination and Fisheries Liaison

The following contact can provide more information if required:

Telephone Number (Day Operations)	+44 (0) 333 344 5255
Email for Duty Marine Coordinator	seagreenmarinecoordination@sse.com
Address	Seagreen Wind Energy Ltd, Inchbraoch House Montrose Port Authority, South Quay Ferryden, Montrose, Angus DD10 9SL.

Fisheries liaison is coordinated by Brown and May Marine Ltd. For all fisheries enquiries, Alex Winrow-Giffin is primary contact:

Telephone Number	+44 (0) 1379872144
Mobile number	+44 (0) 7760 160039
Email	Alex@brownmay.com
Address	Brown and May Marine Progress Way Mid Suffolk Business Park Eye, Suffolk IP23 7HU

1. Area of Planned Activity.

A shallow geotechnical survey will take place within the proposed Seagreen Phase 1A Export Cable landfall area situated close to the shoreline at Cockenzie in the Firth of Forth. The coordinates of the survey center line are provided in the following table, the survey area is shown below in Fig 1.

Latitude (DDM WGS 84)	Longitude (DDM WGS 84)
55° 58.042'N	2° 58.926'W

NOTICE TO MARINERS

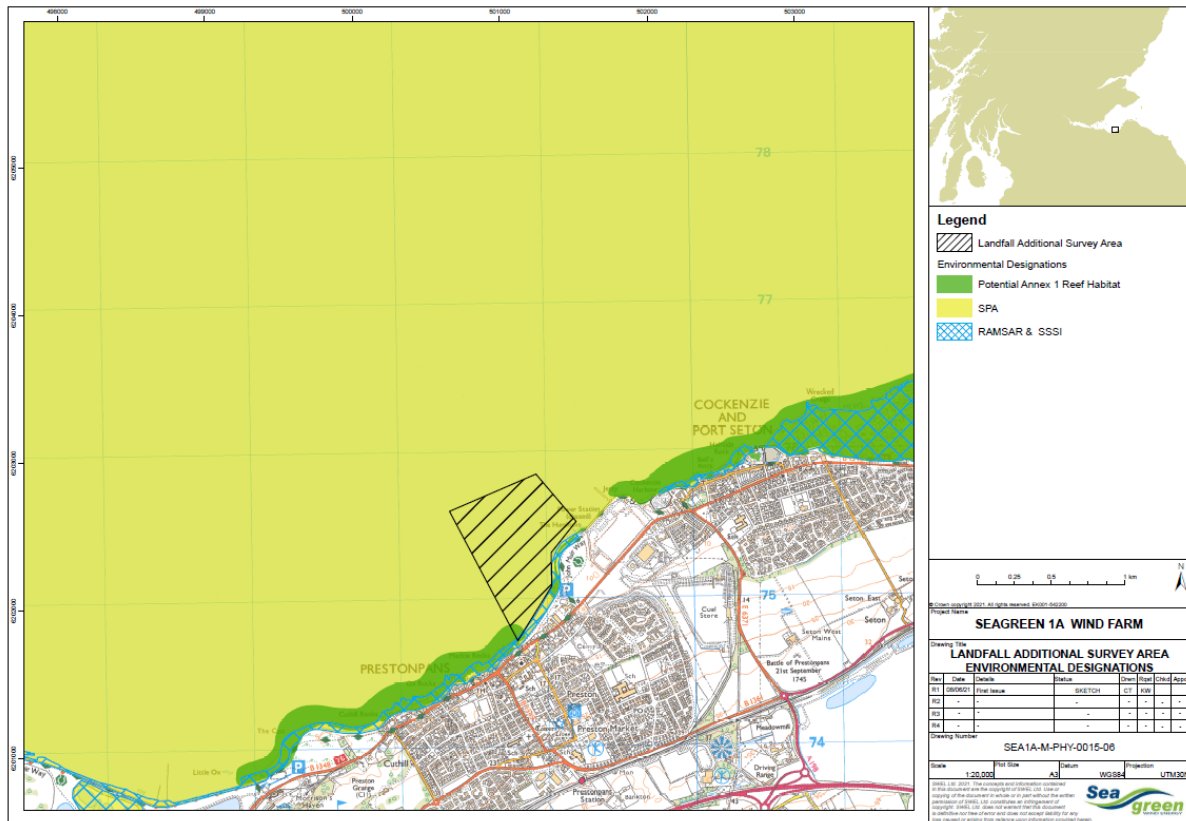


Fig 1.

2. Activity Description.

The survey vessel Pulsar will be undertaking a shallow geotechnical survey involving sediment probing and ROV inspections of the seabed. During the operations the vessel will be restricted in its ability to manoeuvre and will display the appropriate day shapes and lights. Passing vessels are requested to maintain a minimum 500m safety distance from Pulsar during operations, reducing speed to minimise wake disturbance. The survey vessel is expected to arrive on or around the 7th of July with the works expected to completed within four days.

3. Vessel associated with this activity.

Vessel Name – Pulsar	
General Description and Dimensions:	Survey Vessel – LOA 7.2m, beam 2.0m.
Call Sign:	2FBX2
MMSI:	235089965
Satellite communications details	N/A
Direct Bridge/ Masters Number	+44 (0) 7709 571885

NOTICE TO MARINERS

Onshore Representative:

John Sadler - +44 (0) 7876 638048



4. General Safety Advice

All vessels engaged in the survey activity will exhibit appropriate lights and shapes prescribed by the International Regulations for Preventing Collisions at Sea; relative to their operations. All vessels engaged in the activity will also transmit an Automatic Identification System (AIS) message.

ALL VESSELS ARE REQUESTED to give the survey vessel Pulsar at least 500 m safety clearance.

MARINERS ARE REMINDED to navigate with caution and keep continued watch on VHF Ch.70/16 when navigating the area.

5. Distribution List

A central list of recipients is maintained by the Marine Coordinator; if you are not the appropriate recipient of these notices, or do not wish to receive the notices in the future, please contact us at the address included in Section 1 of this notice.